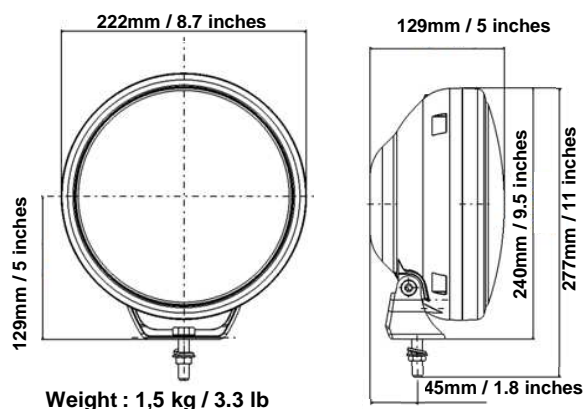


CIBIE

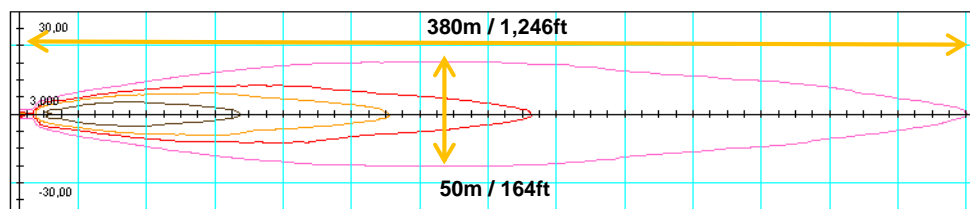
Super OSCAR® LED

(Ref.045308 full black – 045309 black & chrome)

Product & dimensions



Beam pattern



Technical characteristics

Product conception

Aluminum die casted housing
Polycarbonate coated lens
Polycarbonate aluminized reflector
2 high power LED
Complex surfaces reflector
Multi-positioning bracket
12/24 V

Performances

ECE reference index: 17,5
LED flux: 1,400 lumens
Output flux: 700 lumens
Luminous intensity: 75,000 candelas
Light colour: 6,000 kelvins

Applications

Additional high beam for: 4WDs, pick-ups, trucks, heavy duties, agricultural vehicles, construction vehicles, marine boats, mining vehicles ...

USP

Characteristics

Performances

Advantages

Optimized visibility & improved safety thanks to LED performing lighting

Compliant with all international regulations

Tested in extreme conditions

EMC compatibility

Benefits

Optical efficiency improved by +30% compared to halogen technology, highly homogeneous beam

ECE / SAE / CCC homologated for road usage

IP67, vibration 6G, working temperature: from -40°C to +70°C / -40°F to 158°F, corrosion and UV resistant

ECE R10 + CISPR25 Class3

One of the lightest homologated high beams in the world: only 1,5kg / 3.3 lb

White colour beam
5x less consuming than halogen

Design / Style

Compact and efficient

Innovation

Full LED technology
Consumption 14W

Spare parts

CIBIE® Cover x2
Ref: 047933

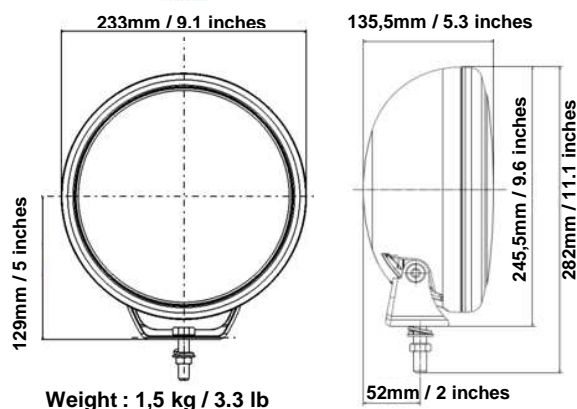


CIBIE

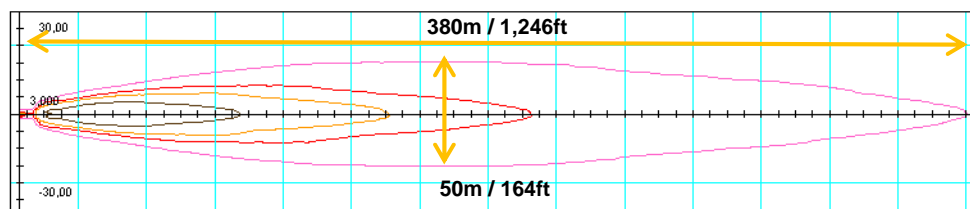
Super OSCAR® LED

(Ref.045310 full chrome – 045311 customizable)

Product & dimensions



Beam pattern



Technical characteristics

Product conception

Aluminum die casted housing
Polycarbonate coated lens
Polycarbonate aluminized reflector
2 high power LED
Complex surfaces reflector
Multi-positioning bracket
12/24 V

Performances

ECE reference index: 17,5
 LED flux: 1,400 lumens
 Output flux: 700 lumens
 Luminous intensity: 75,000 candelas
 Light colour: 6,000 kelvins

Applications

Additional high beam for: 4WDs, pick-ups, trucks, heavy duties, agricultural vehicles, construction vehicles, marine boats, mining vehicles ...

USP

Characteristics

Performances

Advantages

Optimized visibility & improved safety thanks to LED performing lighting

Compliant with all international regulations

Tested in extreme conditions

EMC compatibility

Benefits

Optical efficiency improved by +30% compared to halogen technology, highly homogeneous beam

ECE / SAE / CCC homologated for road usage

IP67, vibration 6G, working temperature: from -40°C to +70°C / -40°F to 158°F, corrosion and UV resistant

ECE R10 + CISPR25 Class3

Design / Style

Compact and efficient

Customizable product

One of the lightest homologated high beams in the world: only 1,5kg / 3.3 lb

Prepainted version available for a unique look

Innovation

Full LED technology

Consumption 14W

White colour beam

5x less consuming than halogen

Spare parts

CIBIE® Cover x2
 Ref: 047934

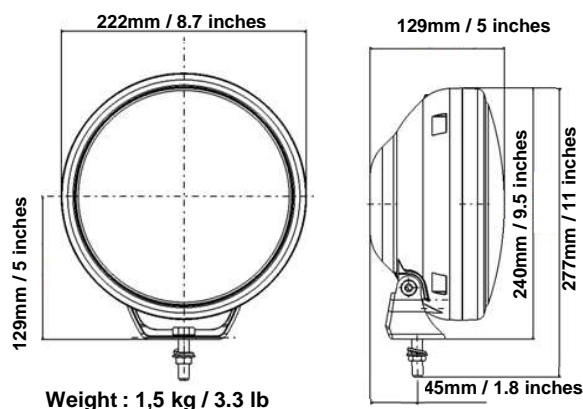


CIBIE

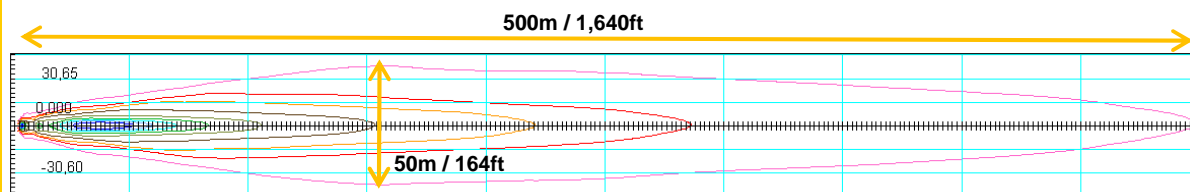
Super OSCAR® LED – Wide Beam

(Ref.045312 full black – 045313 black & chrome)

Product & dimensions



Beam pattern



Technical characteristics

Product conception

Aluminum die casted housing
Polycarbonate coated lens
Polycarbonate aluminized reflector
2 high power LED
Complex surfaces reflector
Multi-positioning bracket
12/24 V

Performances

ECE reference index: 27,5
LED flux: 2,400 lumens
Output flux: 1,200 lumens
Luminous intensity: 125,000 candelas
Light colour: 6,000 kelvins

Applications

Additional high beam for: 4WDs, pick-ups, trucks, heavy duties, agricultural vehicles, construction vehicles, marine boats, mining vehicles ...

USP

Characteristics

Advantages

Benefits

Performances

Optimized visibility & improved safety thanks to LED performing lighting

Optical efficiency improved by +30% compared to halogen technology, highly homogeneous beam

Compliant with all international regulations

ECE / CCC homologated for road usage

Tested in extreme conditions

IP67, vibration 6G, working temperature: from -40°C to +70°C / -40°F to 158°F, corrosion and UV resistant

EMC compatibility

ECE R10 + CISPR25 Class3

Design / Style

Compact and efficient

One of the lightest homologated high beams in the world: only 1,5kg / 3.3 lb

Innovation

Full LED technology
Consumption 26W

White colour beam
5x less consuming than halogen

Spare parts

CIBIE® Cover x2
Ref: 047933

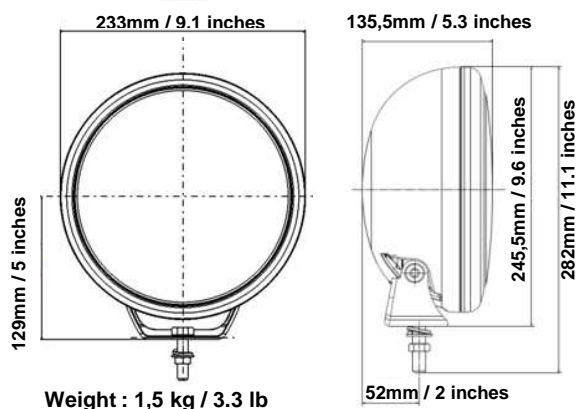
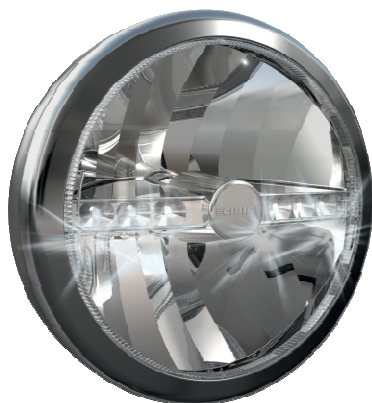


CIBIE

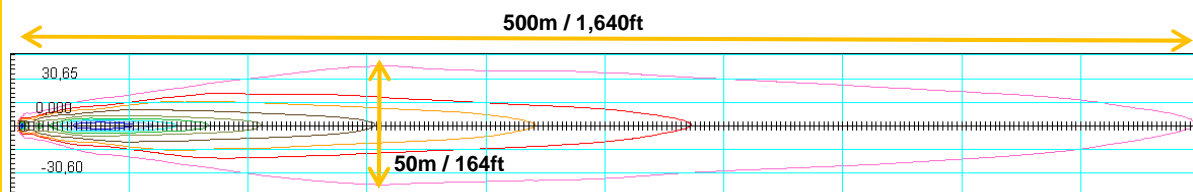
Super OSCAR® LED – Wide Beam

(Ref.045314 full chrome – 045315 customizable)

Product & dimensions



Beam pattern



Technical characteristics

Product conception

Aluminum die casted housing
Polycarbonate coated lens
Polycarbonate aluminized reflector
2 high power LED
Complex surfaces reflector
Multi-positioning bracket
12/24 V

Performances

ECE reference index: 27,5
LED flux: 2,400 lumens
Output flux: 1,200 lumens
Luminous intensity: 125,000 candelas
Light colour: 6,000 kelvins

Applications

Additional high beam for: 4WDs, pick-ups, trucks, heavy duties, agricultural vehicles, construction vehicles, marine boats, mining vehicles ...

USP

Characteristics

Performances

Advantages

Optimized visibility & improved safety thanks to LED performing lighting
Compliant with all international regulations
Tested in extreme conditions
EMC compatibility

Benefits

Optical efficiency improved by +30% compared to halogen technology, highly homogeneous beam
ECE / CCC homologated for road usage
IP67, vibration 6G, working temperature: from -40°C to +70°C / -40°F to 158°F, corrosion and UV resistant
ECE R10 + CISPR25 Class3

Design / Style

Compact and efficient
Customizable product

One of the lightest homologated high beams in the world: only 1,5kg / 3.3 lb
Prepainted version available for a unique look

Innovation

Full LED technology
Consumption 26W

White colour beam
5x less consuming than halogen

Spare parts

CIBIE® Cover x2
Ref: 047934

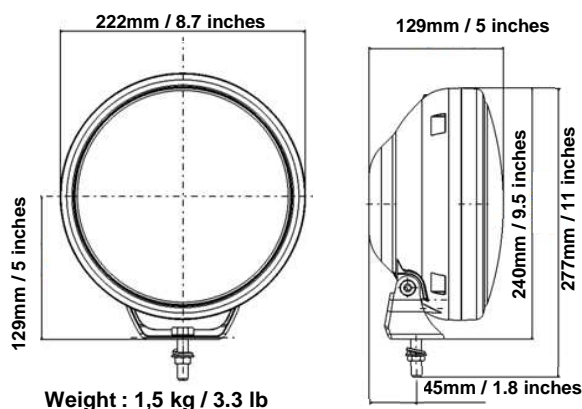


CIBIE

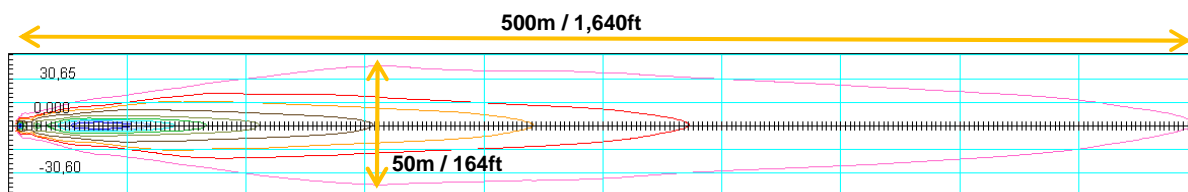
Super OSCAR® LED – Wide Beam and position light

(Ref.045316 full black – 045317 black & chrome)

Product & dimensions



Beam pattern



Technical characteristics

Product conception

Aluminum die casted housing
Polycarbonate coated lens
Polycarbonate aluminized reflector
2 high power LED
Complex surfaces reflector
Multi-positioning bracket
12/24 V

Performances

ECE reference index: 27,5
LED flux: 2,400 lumens
Output flux: 1,200 lumens
Luminous intensity: 125,000 candelas
Light colour: 6,000 kelvins

Applications

Additional high beam for: 4WDs, pick-ups, trucks, heavy duties, agricultural vehicles, construction vehicles, marine boats, mining vehicles ...

USP

Characteristics

Performances

Advantages

Optimized visibility & improved safety thanks to LED performing lighting

Position light function

Compliant with all international regulations

Tested in extreme conditions

EMC compatibility

Benefits

Optical efficiency improved by +30% compared to halogen technology, highly homogeneous beam

Improved safety

ECE / CCC homologated for road usage

IP67, vibration 6G, working temperature: from -40°C to +70°C / -40°F to 158°F, corrosion and UV resistant

ECE R10 + CISPR25 Class3

One of the lightest homologated high beams in the world: only 1,5kg / 3.3 lb

White colour beam

5x less consuming than halogen

Design / Style

Compact and efficient

Innovation

Full LED technology
Consumption 26W

Spare parts

CIBIE® Cover x2
Ref: 047933

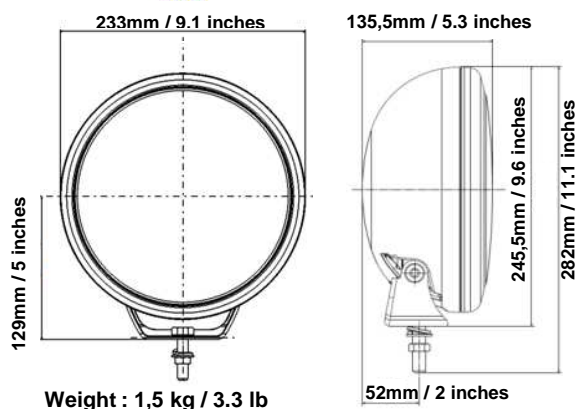
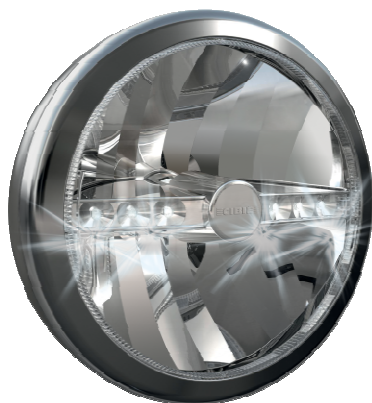


CIBIE

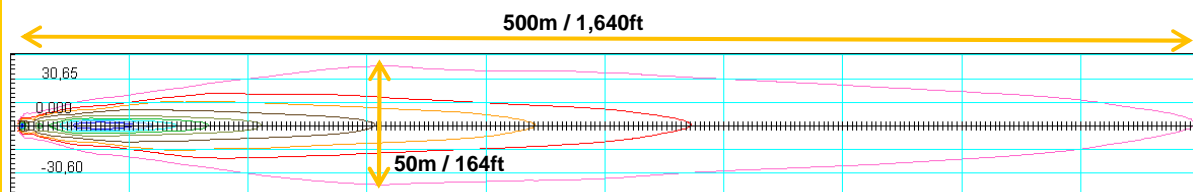
Super OSCAR® LED – Wide Beam and position light

(Ref.045318 full chrome – 045319 customizable)

Product & dimensions



Beam pattern



Technical characteristics

Product conception

Aluminum die casted housing
Polycarbonate coated lens
Polycarbonate aluminized reflector
2 high power LED
Complex surfaces reflector
Multi-positioning bracket
12/24 V

Performances

ECE reference index: 27,5
LED flux: 2,400 lumens
Output flux: 1,200 lumens
Luminous intensity: 125,000 candelas
Light colour: 6,000 kelvins

Applications

Additional high beam for: 4WDs, pick-ups, trucks, heavy duties, agricultural vehicles, construction vehicles, marine boats, mining vehicles ...

USP

Characteristics	Advantages	Benefits
Performances	Optimized visibility & improved safety thanks to LED performing lighting Position light function Compliant with all international regulations Tested in extreme conditions EMC compatibility	Optical efficiency improved by +30% compared to halogen technology, highly homogeneous beam Improved safety ECE / CCC homologated for road usage IP67, vibration 6G, working temperature: from -40°C to +70°C / -40°F to 158°F, corrosion and UV resistant ECE R10 + CISPR25 Class3
Design / Style	Compact and efficient Customizable product	One of the lightest homologated high beams in the world: only 1,5kg / 3.3 lb Prepainted version available for a unique look
Innovation	Full LED technology Consumption 26W	White colour beam 5x less consuming than halogen

Spare parts

CIBIE® Cover x2
Ref: 047934

